

Brief Report

LYMPHOID NEOPLASIA

Molecular prediction of durable remission after first-line fludarabine-cyclophosphamide-rituximab in chronic lymphocytic leukemia

Davide Rossi,¹ Lodovico Terzi-di-Bergamo,¹ Lorenzo De Paoli,¹ Michaela Cerri,¹ Guido Ghilardi,¹ Annalisa Chiarenza,² Pietro Bulian,³ Carlo Visco,⁴ Francesca R. Mauro,⁵ Fortunato Morabito,⁶ Agostino Cortelezzi,⁷ Francesco Zaja,⁸ Francesco Forconi,^{9,10} Luca Laurenti,¹¹ Ilaria Del Giudice,⁵ Massimo Gentile,⁶ Iolanda Vincelli,¹² Marina Motta,¹³ Marta Coscia,¹⁴ Gian Matteo Rigolin,¹⁵ Alessandra Tedeschi,¹⁶ Antonino Neri,¹⁷ Roberto Marasca,¹⁸ Omar Perbellini,¹⁹ Carol Moreno,²⁰ Giovanni Del Poeta,²¹ Massimo Massaia,²² Pier Luigi Zinzani,²³ Marco Montillo,¹⁶ Antonio Cuneo,¹⁵ Valter Gattei,³ Robin Foà,⁵ and Gianluca Gaidano¹

¹Division of Hematology, Department of Translational Medicine, Amedeo Avogadro University of Eastern Piedmont, Novara, Italy; ²Hematology, Department of Clinical and Molecular Biomedicine, University of Catania, Catania, Italy; ³Clinical and Experimental Onco-Hematology Unit, Centro di Riferimento Oncologico, Fondazione Istituto di Ricovero e Cura a Carattere Scientifico (IRCCS), Aviano, Italy; ⁴Department of Cell Therapy and Hematology, Ospedale San Bortolo, Vicenza, Italy; ⁵Hematology, Department of Cellular Biotechnologies and Hematology, Sapienza University, Rome, Italy; ⁶Hematology Unit, Department of Onco-Hematology, Hospital of Cosenza, Cosenza, Italy; ⁷Department of Hematology Oncology, Foundation IRCCS Ca' Granda Ospedale Maggiore Policlinico and University of Milan, Milan, Italy; ⁸Clinica Ematologica, Centro Trapianti e Terapie Cellulari "Carlo Melzi" Department of Experimental and Clinical Medical Sciences (DISM), Azienda Ospedaliera Universitaria S. Maria Misericordia, Udine, Italy; ⁹Cancer Sciences Unit, Southampton Cancer Research UK and National Institute for Health Research Experimental Cancer Medicine Centre, University of Southampton, Southampton, United Kingdom; ¹⁰Division of Hematology, University of Siena, Siena, Italy; ¹¹Institute of Hematology, Catholic University of the Sacred Heart, Rome, Italy; ¹²Hematology Unit, Hospital of Reggio Calabria, Reggio Calabria, Italy; ¹³Department of Hematology, Spedali Civili, Brescia, Italy; ¹⁴Division of Hematology, Azienda Ospedaliera Universitaria Città della Salute e della Scienza and University of Turin, Turin, Italy; ¹⁵Hematology Section, Azienda Ospedaliera Universitaria Arcispedale S. Anna, University of Ferrara, Ferrara, Italy; ¹⁶Department of Oncology/Haematology, Niguarda Cancer Center, Niguarda Ca Granda Hospital, Milan, Italy; ¹⁷Department of Clinical Sciences and Community Health, Foundation IRCCS Ca' Granda Ospedale Maggiore Policlinico and University of Milan, Milan, Italy; ¹⁸Division of Hematology, Department of Oncology and Hematology, University of Modena and Reggio Emilia, Modena, Italy; ¹⁹Section of Hematology, Department of Medicine, University of Verona, Verona, Italy; ²⁰Department of Hematology, Hospital de la Santa Creu i Sant Pau, Barcelona, Spain; ²¹Department of Hematology, Tor Vergata University, Rome, Italy; ²²Hematology and Cell Therapy Unit, Ospedale Mauriziano and University of Turin, Turin, Italy; and ²³Institute of Hematology 'L. e A. Seràgnoli', University of Bologna, Bologna, Italy

Key Points

- CLL patients harboring mutated *IGHV* genes but neither 11q or 17p deletion experience durable remission after frontline FCR.

Fludarabine, cyclophosphamide, and rituximab (FCR) has represented a significant treatment advancement in chronic lymphocytic leukemia (CLL). In the new scenario of targeted agents, there is an increasing interest in identifying patients who gain the maximum benefit from FCR. In this observational multicenter retrospective analysis of 404 CLL patients receiving frontline FCR, the combination of three biomarkers that are widely tested before treatment (*IGHV* mutation status, 11q deletion and 17p deletion; available in 80% of the study cohort) allowed to identify a very low-risk category of patients carrying mutated *IGHV* genes but neither 11q or 17p deletion that accounted for 28% of all cases. The majority of very low-risk

patients (71%) remained free of progression after treatment and their hazard of relapse decreased after 4 years from FCR. The life expectancy of very low-risk patients (91% at 5 years) was superimposable to that observed in the matched normal general population, indicating that neither the disease nor complications of its treatment affected survival in this favorable CLL group. These findings need a prospective validation and may be helpful for the design of clinical trials aimed at comparing FCR to new targeted treatments of CLL, and, possibly, for optimized disease management. (*Blood*. 2015;126(16):1921-1924)

Introduction

Fludarabine, cyclophosphamide, and rituximab (FCR) is the most effective chemoimmunotherapy regimen for the management of chronic lymphocytic leukemia (CLL), and represents the current standard for untreated patients who are young and in good physical condition.¹⁻³ Though the majority of CLL patients receiving FCR as frontline therapy are destined to relapse, a subgroup of cases may experience a durable first remission.⁴⁻⁸ In the new scenario of targeted agents

for CLL,⁹⁻¹⁴ affordable treatment strategies should be patient-risk oriented, as well as cost-effective and resource-saving.¹⁵⁻¹⁷ On this basis, there is an increasing interest in identifying a priori patients who may maximally benefit from FCR.

In this observational retrospective study based on a large data set of FCR-treated CLL, we show that the combination of three biomarkers of common use, that is, immunoglobulin heavy variable (*IGHV*) gene

Submitted May 27, 2015; accepted August 10, 2015. Prepublished online as *Blood* First Edition paper, August 14, 2015; DOI 10.1182/blood-2015-05-647925.

The publication costs of this article were defrayed in part by page charge payment. Therefore, and solely to indicate this fact, this article is hereby marked "advertisement" in accordance with 18 USC section 1734.

The online version of this article contains a data supplement.

There is an Inside *Blood* Commentary on this article in this issue.

© 2015 by The American Society of Hematology

Table 1. Univariate and multivariate analysis of PFS

Characteristics	Univariate analysis								Internal bootstrapping validation			
	Univariate analysis				Multivariate analysis				Bootstrap parameters (mean)			
	5-y PFS (%)	Median PFS	95% CI	P	HR	LCI	UCI	P	HR	LCI	UCI	Bootstrap selection (%)
Age <65 y	46.6	58.1	49.5-66.6	.0617	—	—	—	.2323	—	—	—	39.40
Age ≥65 y	42.9	46.5	36.0-56.9		1.23	0.87	1.75		1.24	0.87	1.78	
Binet A	59.5	64.7	31.8-96.6	.0848	—	—	—	.1474	—	—	—	55.90
Binet B+C	43.5	54.3	48.3-60.3		1.57	0.85	2.91		1.72	0.88	3.4	
<i>IGHV</i> mutated	58.6	nr	na	.0005	—	—	—	.0099	—	—	—	88.00
<i>IGHV</i> unmutated	36.3	48.2	43.7-52.7		1.65	1.12	2.41		1.7	1.15	2.52	
No 11q deletion	49.4	56.9	47.1-66.6	.0106	—	—	—	.0096	—	—	—	88.90
11q deletion	18.4	43.5	32.2-54.7		1.67	1.13	2.46		1.67	1.16	2.56	
No 17p deletion	48	58.9	49.3-68.4	<.0001	—	—	—	<.0001	—	—	—	100
17p deletion	10.9	22.5	8.5-36.4		3.72	2.42	5.71		4.04	2.59	6.31	
Female	50.1	66.2	50.5-82.0	.324	—	—	—	—	—	—	—	—
Male	42.7	51.6	43.8-59.3		—	—	—	—	—	—	—	—
No13q deletion	45.4	55.6	48.3-62.8	.9041	—	—	—	—	—	—	—	—
13q deletion	41.1	50.8	38.6-63.0		—	—	—	—	—	—	—	—
No trisomy 12	45.1	55.6	46.3-64.8	.6188	—	—	—	—	—	—	—	—
Trisomy 12	40.3	51.7	44.9-58.6		—	—	—	—	—	—	—	—

Shrinkage coefficient: 0.92.

Discrimination: bias-corrected c-index: 0.64; optimism: 0.02.

Calibration: bias-corrected calibration slope: 0.91; optimism: 0.09.

CI, confidence interval; LCI, lower confidence interval; n/a, not applicable; nr, not reached; UCI, upper confidence interval.

mutation status and fluorescence in situ hybridization abnormalities at chromosomes 11q and 17p, allows segregation of a subgroup of patients who may achieve durable remissions after first-line FCR and experience an expected survival similar to that of the general population.

estimates were calculated utilizing Italian life tables (Human Mortality Database; <http://www.mortality.org/>, accessed June 18, 2014). All statistical tests were two-sided. Statistical significance was defined as *P* value <.05. The analysis was performed with the Statistical Package for the Social Sciences software, v.22.0 (Chicago, IL) and with R statistical package 3.1.2 (<http://www.r-project.org>) (further details are in the supplemental Appendix).

Study design

Patients

The study was designed as a retrospective observational analysis, and collected 404 progressive and previously untreated CLL patients who consecutively received standard FCR as first-line therapy in 19 hematologic centers between 2001 and 2010. The database was locked in June 2014 (for further details, see the supplemental Appendix, available on the *Blood* Web site). The Reporting Recommendations for Tumor Marker Prognostic Studies criteria were followed throughout this study.¹⁸ Patients provided informed consent in accordance with local Institutional Review Board requirements and the Declaration of Helsinki. The study was approved by the Ethical Committee of the Ospedale Maggiore della Carità di Novara associated with the Amedeo Avogadro University of Eastern Piedmont (protocol code 59/CE; study number CE 8/11).

Statistical analysis

Progression-free survival (PFS) was the primary end point and was measured from start date of treatment to date of progression according to International Workshop on CLL-National Cancer Institute (NCI) guidelines (event), death (event), or last follow-up (censoring).¹⁹ Overall survival (OS) was measured from date of initial presentation to date of death from any cause (event) or last follow-up (censoring).¹⁹ Response assessment was according to NCI or International Workshop on CLL-NCI guidelines.^{19,20} Survival analysis was performed by Kaplan–Meier method and compared between strata using the Log-rank test. The adjusted association between exposure variables and PFS was estimated by Cox regression. The hierarchical order of relevance in predicting PFS of covariates was estimated by recursive partitioning (rpart function of R). Relative survival, defined as the ratio between actuarial survival observed in the CLL cohort and expected survival of the general Italian population matched to CLL patients by sex, age, and calendar year of FCR start, was calculated using the Ederer II method. Expected survival

Results and discussion

The characteristics of the study cohort (*n* = 404; 317 with complete molecular data) were consistent with those reported in CLL receiving FCR as first treatment (supplemental Table 1).¹⁻³ After a median follow-up of 70 months, 194 patients have progressed and 72 have died, accounting for a median PFS of 54.8 months and for a 5-year OS of 81.2% (median: not reached) (supplemental Figure 1). By multivariate analysis (Table 1 and supplemental Table 2), unmutated *IGHV* genes (hazard ratio [HR]: 1.65; *P* = .0099), 11q deletion (HR: 1.67; *P* = .0096), and 17p deletion (HR: 3.72; *P* ≤ .0001) maintained independent association with PFS (supplemental Figures 2-8), thus providing the rationale to use these molecular features in the development of a model to predict remission duration after FCR.

By recursive partitioning, a low-risk category was hierarchically classified that accounted for 28.4% of the study cohort and comprised patients harboring mutated *IGHV* genes but lacking both 11q deletion and 17p deletion (supplemental Table 3; supplemental Figures 7-9). The hazard of relapse in low-risk patients progressively decreased after 4 years from FCR (Figure 1; supplemental Figures 10 and 11), and most of them (71.6%) were projected to remain free of progression and treatment (Figure 1; supplemental Figure 12). Consistently, the life expectancy of low-risk patients was similar to that observed in the matched normal general population (5-year relative survival: 95.8%; *P* = .2770) (Figure 1), indicating that neither disease nor complications of treatment affected survival in this favorable CLL group.

Although the study lacked a systematic assessment of minimal residual disease (MRD),^{21,22} a fraction (4/9) of low-risk patients alive

— Low-risk group (*IGHV* mutated) — Intermediate-risk group (*IGHV* unmutated and/or 11q deletion) — High-risk group (17p deletion)

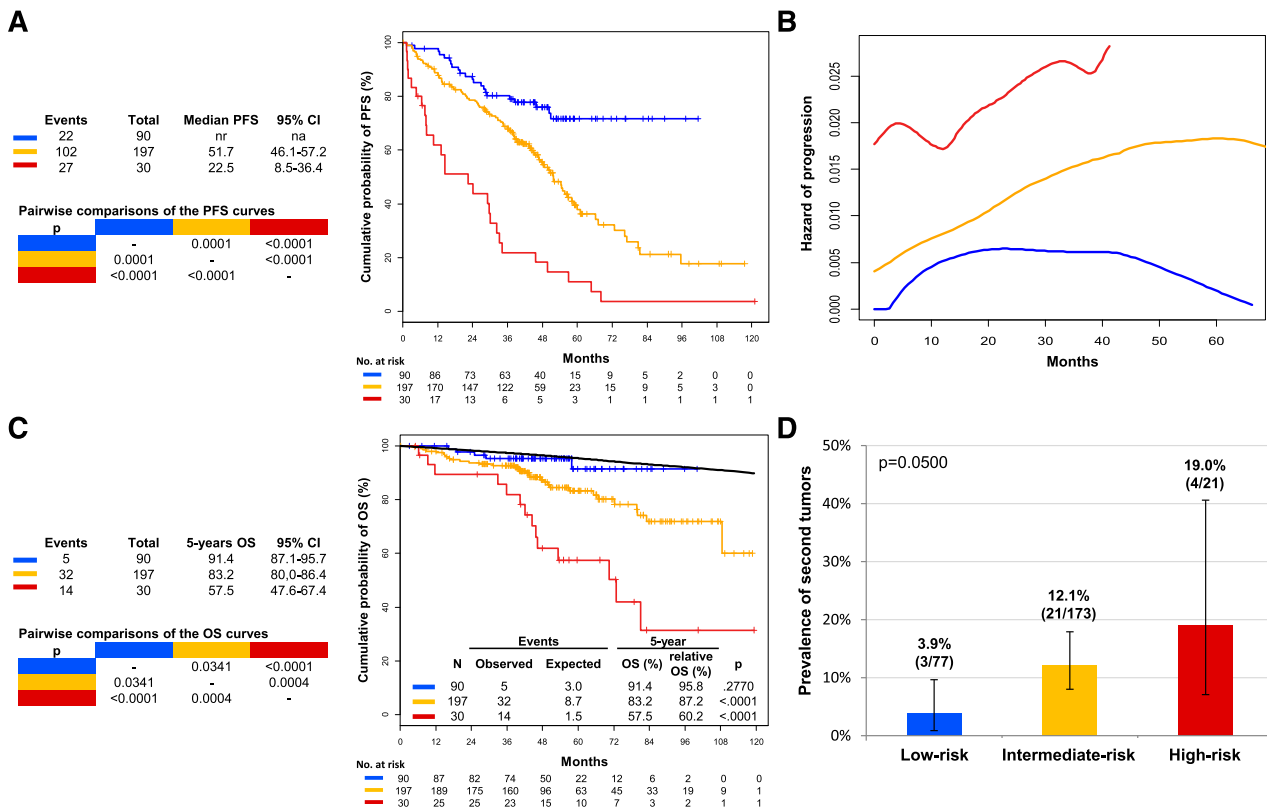


Figure 1. Estimates of PFS, hazard of progression, OS, and prevalence of second tumors according to the model based on 17p deletion, 11q deletion, and *IGHV* mutation status. High-risk cases harboring 17p deletion independent of co-occurring 11q deletion or unmutated *IGHV* genes are color-coded in red. Intermediate-risk cases harboring unmutated *IGHV* genes and/or 11q deletion in the absence of 17p deletion are color-coded in yellow. Low-risk cases harboring mutated *IGHV* genes in the absence of 11q and 17p deletion are color-coded in blue. (A) PFS. (B) Estimate of the hazard of progression in relation to the time elapsed from FCR treatment start. (C) OS. The black line represents the expected OS in the age, sex, and calendar year of treatment-matched general population. *P* values according to Log-rank statistics. (D) Prevalence of second tumors among assessable cases of the three risk subgroups. Whiskers represent the 95% confidence interval (CI) of the proportion. *P* value according to Fisher's exact test. na, not applicable; nr, not reached.

and progression-free for 6 or more years from FCR (range, 6-9 years) was investigated by flow cytometry on peripheral blood for MRD (sensitivity 10^{-4}) and tested negative in all cases (data not shown). This observation proved the persistence of a deep response among low-risk patients who are in persistent remission.

CLL is associated with an increased risk of developing second cancers²³ and long-term toxicities, including second malignancies, represent a concern for FCR-treated patients.²⁴ In our cohort, a small proportion of low-risk cases (3.9%) developed a second tumor (Figure 1). Though an extended follow-up might capture additional events, the rate of second primary tumors in low-risk cases was lower than that observed among the other risk subgroups of patients and did not translate into an excess mortality compared with the matched general population (Figure 1). This might be explained, at least in part, by the lower requirement of salvage treatments, and thus by the low overall load of chemotherapy received by low-risk patients.

The follow-up of our cohort does not equate that of the seminal FCR series,⁴⁻⁸ and the retrospective design of our study represents an inevitable limitation. Nevertheless, an external validation of our data are provided by the consistent description of patients in durable remission in clinical trials of FCR-treated CLL, and by the individual association between PFS and the status of 17p, 11q, or *IGHV* by multivariable analyses from prospective cohorts.^{2,5,6,25} The novel contribution of our study is the first demonstration that the combination of high-risk biomarkers widely tested prior to treatment allows the segregation of a subgroup of CLL patients projected to

maintain a durable remission after FCR. This predictive model may be of help for therapeutic stratification of CLL.

In the era of personalized medicine, challenges of CLL treatment will involve correctly matching therapy to the unique risk profile of each individual patient. Our data support front-line FCR as a highly active option in physically fit patients with progressive CLL whose disease has a low-risk molecular profile. Novel agents, such as signaling kinase inhibitors, show promising activity in CLL but are associated with considerable costs and are not affordable in many health care systems if applied broadly across large numbers of patients.¹⁵⁻¹⁷ To responsibly and effectively advance the development of these new therapies, novel drugs should be targeted specifically to patient subgroups in which they can provide the greatest benefit compared with established chemoimmunotherapy. Given the highly favorable outcome of *IGHV*-mutated CLL lacking 17p and 11q deletion hereby reported following front-line FCR treatment, assessment of whether novel agents provide additional benefit in this biologic subgroup will require highly powered studies with a long follow-up, and should include quality of life and long-term toxicities among end points.

Acknowledgments

This study was supported by Special Program Molecular Clinical Oncology 5 x 1000 no. 10007, My First Associazione Italiana per la

Ricerca sul Cancro (AIRC) Grant no. 13470, AIRC Foundation (Milan, Italy), Fondazione Cariplo (grant 2012-0689), Progetto Giovani Ricercatori (grant GR-2010-2317594), Ministero della Salute (Rome, Italy), Compagnia di San Paolo (Grant PMN_call_2012_0071; Turin, Italy), Futuro in Ricerca 2012 (grant RBFR12D1CB), Ministero dell'Istruzione, dell'Università e della Ricerca (Rome, Italy), Cancer Research UK, National Institute for Health Research Experimental Cancer Medicine (NIHR ECMC) UK, and Leukemia Lymphoma Research UK (no. 14037).

Authorship

Contribution: D.R. and G. Gaidano designed the study, interpreted data, and wrote the manuscript; D.R., L.T.-d.-B., and G. Ghilardi

performed statistical analysis; L.D.P., M. Cerri, A. Chiarenza, C.V., F.F., I.D.G., M.G., I.V., M. Motta, M. Coscia, G.M.R., A.T., A.N., O.P., and C.M. collected clinical and molecular data and contributed to manuscript revision; and P.B., F.R.M., F.M., A. Cortelezzi, F.Z., F.F., L.L., R.M., G.D.P., M. Massaia, P.L.Z., M. Montillo, A. Cuneo, V.G., and R.F. contributed to data interpretation and manuscript revision.

Conflict-of-interest disclosure: The authors declare no competing financial interests.

Correspondence: Davide Rossi, Division of Hematology, Department of Translational Medicine, Amedeo Avogadro University of Eastern Piedmont, Via Solaroli 17, 28100 Novara, Italy; e-mail: rossidav@med.unipmn.it; and Gianluca Gaidano, Division of Hematology, Department of Translational Medicine, Amedeo Avogadro University of Eastern Piedmont, Via Solaroli 17, 28100 Novara, Italy; e-mail: gianluca.gaidano@med.uniupo.it.

References

- Keating MJ, O'Brien S, Albitar M, et al. Early results of a chemoimmunotherapy regimen of fludarabine, cyclophosphamide, and rituximab as initial therapy for chronic lymphocytic leukemia. *J Clin Oncol*. 2005;23(18):4079-4088.
- Hallek M, Fischer K, Fingerle-Rowson G, et al; International Group of Investigators; German Chronic Lymphocytic Leukaemia Study Group. Addition of rituximab to fludarabine and cyclophosphamide in patients with chronic lymphocytic leukaemia: a randomised, open-label, phase 3 trial. *Lancet*. 2010;376(9747):1164-1174.
- Lepretre S, Aurran T, Mahé B, et al. Excess mortality after treatment with fludarabine and cyclophosphamide in combination with alemtuzumab in previously untreated patients with chronic lymphocytic leukemia in a randomized phase 3 trial. *Blood*. 2012;119(22):5104-5110.
- Tam CS, O'Brien S, Wierda W, et al. Long-term results of the fludarabine, cyclophosphamide, and rituximab regimen as initial therapy of chronic lymphocytic leukemia. *Blood*. 2008;112(4):975-980.
- Lin KI, Tam CS, Keating MJ, et al. Relevance of the immunoglobulin VH somatic mutation status in patients with chronic lymphocytic leukemia treated with fludarabine, cyclophosphamide, and rituximab (FCR) or related chemoimmunotherapy regimens. *Blood*. 2009;113(14):3168-3171.
- Fink AM, Böttcher S, Ritgen M, et al. Prediction of poor outcome in CLL patients following first-line treatment with fludarabine, cyclophosphamide and rituximab. *Leukemia*. 2013;27(9):1949-1952.
- Stilgenbauer S, Schnaiter A, Paschka P, et al. Gene mutations and treatment outcome in chronic lymphocytic leukemia: results from the CLL8 trial. *Blood*. 2014;123(21):3247-3254.
- Tam CS, O'Brien S, Plunkett W, et al. Long-term results of first salvage treatment in CLL patients treated initially with FCR (fludarabine, cyclophosphamide, rituximab). *Blood*. 2014;124(20):3059-3064.
- Byrd JC, Furman RR, Coutre SE, et al. Targeting BTK with ibrutinib in relapsed chronic lymphocytic leukemia. *N Engl J Med*. 2013;369(1):32-42.
- Burger JA, Keating MJ, Wierda WG, et al. Safety and activity of ibrutinib plus rituximab for patients with high-risk chronic lymphocytic leukaemia: a single-arm, phase 2 study. *Lancet Oncol*. 2014;15(10):1090-1099.
- Byrd JC, Brown JR, O'Brien S, et al; RESONATE Investigators. Ibrutinib versus ofatumumab in previously treated chronic lymphoid leukemia. *N Engl J Med*. 2014;371(3):213-223.
- Furman RR, Sharman JP, Coutre SE, et al. Idelalisib and rituximab in relapsed chronic lymphocytic leukemia. *N Engl J Med*. 2014;370(11):997-1007.
- O'Brien S, Furman RR, Coutre SE, et al. Ibrutinib as initial therapy for elderly patients with chronic lymphocytic leukaemia or small lymphocytic lymphoma: an open-label, multicentre, phase 1b/2 trial. *Lancet Oncol*. 2014;15(1):48-58.
- Farooqui MZ, Valdez J, Martyr S, et al. Ibrutinib for previously untreated and relapsed or refractory chronic lymphocytic leukaemia with TP53 aberrations: a phase 2, single-arm trial. *Lancet Oncol*. 2015;16(2):169-176.
- Shanafelt TD, Borah BJ, Finnes HD, et al. Impact of ibrutinib and idelalisib on the pharmaceutical cost of treating chronic lymphocytic leukemia at the individual and societal levels. *J Oncol Pract*. 2015;11(3):252-258.
- Foà R, Guarini A. A mechanism-driven treatment for chronic lymphocytic leukemia? *N Engl J Med*. 2013;369(1):85-87.
- Foà R. Changes in the treatment landscape for chronic lymphoid leukemia. *N Engl J Med*. 2014;371(3):273-274.
- McShane LM, Altman DG, Sauerbrei W, Taube SE, Gion M, Clark GM; Statistics Subcommittee of NCI-EORTC Working Group on Cancer Diagnostics. REporting recommendations for tumor MARKer prognostic studies (REMARK). *Breast Cancer Res Treat*. 2006;100(2):229-235.
- Cheson BD, Bennett JM, Grever M, et al. National Cancer Institute-sponsored Working Group guidelines for chronic lymphocytic leukemia: revised guidelines for diagnosis and treatment. *Blood*. 1996;87(12):4990-4997.
- Hallek M, Cheson BD, Catovsky D, et al; International Workshop on Chronic Lymphocytic Leukemia. Guidelines for the diagnosis and treatment of chronic lymphocytic leukemia: a report from the International Workshop on Chronic Lymphocytic Leukemia updating the National Cancer Institute-Working Group 1996 guidelines. *Blood*. 2008;111(12):5446-5456.
- Strati P, Keating MJ, O'Brien SM, et al. Eradication of bone marrow minimal residual disease may prompt early treatment discontinuation in CLL. *Blood*. 2014;123(24):3727-3732.
- Böttcher S, Ritgen M, Fischer K, et al. Minimal residual disease quantification is an independent predictor of progression-free and overall survival in chronic lymphocytic leukemia: a multivariate analysis from the randomized GCLLSG CLL8 trial. *J Clin Oncol*. 2012;30(9):980-988.
- Hisada M, Biggar RJ, Greene MH, Fraumeni JF Jr, Travis LB. Solid tumors after chronic lymphocytic leukemia. *Blood*. 2001;98(6):1979-1981.
- Benjamini O, Jain P, Trinh L, et al. Second cancers in patients with chronic lymphocytic leukemia who received frontline fludarabine, cyclophosphamide and rituximab therapy: distribution and clinical outcomes. *Leuk Lymphoma*. 2015;56(6):1643-1650.
- Pflug N, Bahlo J, Shanafelt TD, et al. Development of a comprehensive prognostic index for patients with chronic lymphocytic leukemia. *Blood*. 2014;124(1):49-62.



blood[®]

2015 126: 1921-1924

doi:10.1182/blood-2015-05-647925 originally published
online August 14, 2015

Molecular prediction of durable remission after first-line fludarabine-cyclophosphamide-rituximab in chronic lymphocytic leukemia

Davide Rossi, Lodovico Terzi-di-Bergamo, Lorenzo De Paoli, Michaela Cerri, Guido Ghilardi, Annalisa Chiarenza, Pietro Bulian, Carlo Visco, Francesca R. Mauro, Fortunato Morabito, Agostino Cortelezzi, Francesco Zaja, Francesco Forconi, Luca Laurenti, Ilaria Del Giudice, Massimo Gentile, Iolanda Vincelli, Marina Motta, Marta Coscia, Gian Matteo Rigolin, Alessandra Tedeschi, Antonino Neri, Roberto Marasca, Omar Perbellini, Carol Moreno, Giovanni Del Poeta, Massimo Massaia, Pier Luigi Zinzani, Marco Montillo, Antonio Cuneo, Valter Gattei, Robin Foà and Gianluca Gaidano

Updated information and services can be found at:

<http://www.bloodjournal.org/content/126/16/1921.full.html>

Articles on similar topics can be found in the following Blood collections

[Brief Reports](#) (1996 articles)

[Clinical Trials and Observations](#) (4892 articles)

[Free Research Articles](#) (5281 articles)

[Lymphoid Neoplasia](#) (2972 articles)

Information about reproducing this article in parts or in its entirety may be found online at:

http://www.bloodjournal.org/site/misc/rights.xhtml#repub_requests

Information about ordering reprints may be found online at:

<http://www.bloodjournal.org/site/misc/rights.xhtml#reprints>

Information about subscriptions and ASH membership may be found online at:

<http://www.bloodjournal.org/site/subscriptions/index.xhtml>